
together
we are

GREATER MANCHESTER

Greater Manchester Strategy 2025–35
Summary



A thriving city
region where
everyone can
live a good life.

Bolton
Bury
Manchester
Oldham
Rochdale

Salford
Stockport
Tameside
Trafford
Wigan

together
we are

**GREATER
MANCHESTER**

Our collective vision for Greater Manchester's next decade.

We are a city region with a global reach. At our heart is a vibrant central city, surrounded by unique places which together are home to nearly three million people.

We represent those diverse people, communities, businesses, and organisations of Greater Manchester. We've forged a partnership that's stronger than the sum of its parts, spanning the public, private, voluntary, community, faith, social

enterprise and academic sectors.

Our hyper-collaborative approach has put Greater Manchester at the forefront of progress. We're home to renowned universities and research institutions. We have the largest tech cluster outside London. We have one of Europe's top visitor economies, are the beating heart of the UK's creative industries, a sporting capital, pioneers of public transport and trailblazers of English devolution.

Our collective vision for the next decade is to see a thriving city region where everyone can live a good life. But economic and social progress have always gone hand in hand here, so Greater Manchester is only successful if every part of our city region and every person in our city region is successful.

By creating the conditions for our people and our businesses to succeed we can unlock a new form of economic growth where no one is left behind.

Our plans for growing our economy and making sure all our people can live well will fix the foundations of life: shelter, safety, mobility, opportunity and support, deliver a greener city region and create a once in a generation opportunity to tackle all forms of inequality.

Our strategy is evidence-based, informed by data and deep knowledge of our communities and underpinned by a proven track record.

With the right backing and investment from the Government, we can get building, moving and working together to deliver for every place and everyone in Greater Manchester.

We'll achieve our vision by always focusing on two interlocking areas: growing our economy and making sure all our people can live well.

Growing our economy

Greater Manchester's trajectory as the fastest growing economy in the UK has been boosted by the growth of new industries, innovation and spin-outs from our universities, the resilience of our manufacturers, and the city region's status as an international hub for business and financial services.

A ten-year pipeline of specific projects in growth locations will continue to advance new industry and help spread prosperity across the city region.

And we'll work with businesses to ensure they have the right support to flourish – from fixing skills gaps to funding to drive innovation and productivity.

Making sure people can live well

At the same time, we will invest in people, creating the right conditions for everyone to live happier, healthier lives and access the opportunities that come from growth, providing support where it's needed.

We'll do this in a way that increases community wealth, shifting power and resources to trusted social, civic and community organisations.

They will work as equal partners alongside our public sector with dedicated funding and an investment strategy that recognises the foundational benefits of social, civic and community organisations that provide everyday support and foster hope, connection and resilience.

A photograph of three diverse people (two men and one woman) standing in front of a historic stone clock tower, likely the Manchester Town Hall. The text 'Greater Manchester is only successful if every part of our city region is successful.' is overlaid in large white font on the right side of the image.

**Greater
Manchester
is only
successful
if every part
of our city
region is
successful.**

Together we have...

Helped Greater Manchester become the fastest growing local economy in the UK



Average growth has been at double the UK rate and, in 2023, the total value reached over £100 billion for the first time.

Greater Manchester tech companies raised a record £532 million in funding in 2022, a 50% increase from 2021, whilst companies based in the city region collectively raised over £1.8 billion in venture capital funding in the five years leading up to 2023.

Between 2018 and 2023, Greater Manchester's visitor economy grew by £3.7 billion and added 22,000 jobs, and increased overnight stays by 700,000.

Made Greater Manchester a safer place to live



Greater Manchester Police and Greater Manchester Fire and Rescue Service are the most improved police and fire services in the country.

Neighbourhood crimes fell by 17% in 2024 compared to 2023. And violent crime was down 7% in the year ending December 2024.

Hospital admission rates for knife related/sharp object injuries were down 11% in the year ending September 2024, and down 30% since 2019.



Built 85,000 new homes across Greater Manchester since 2016

Which includes 15,000 affordable homes; 2,617 affordable homes were built in 2023.

Nearly 1,200 social rented homes built over the last 3 years, compared to only 9 in 2016–17.

The Brownfield Housing Fund is forecast to deliver more than 19,000 new homes by March 2026, with 11,000 being affordable.

Since 2020, £228m has been deployed into 176 housing projects on derelict land, creating 14,263 new homes, of which 3,389 have been completed and 6,126 will be affordable.

Launched the Good Landlord Charter.

Committed to a more equal future



Race Equity Framework is strengthening leadership and accountability.

Greater Manchester Voluntary, Community, Faith and Social Enterprise Accord to tackle inequalities collaboratively.



Ensured a greener future for all across Greater Manchester

Places for Everyone supports Greater Manchester's ambition to be carbon neutral by 2038.

Over 570,000 trees planted in the last 5 years; and over 100 local green spaces improved or created.

Fully integrated bus and tram services with tap & go



All of our 1,600 buses on 577 routes are now under local control as part of the Bee Network, accounting for over 160 million trips per year.

Bus passenger numbers are rising, with 14% growth year-on-year in the first franchising area; 45.6 million tram trips in 2024.

130km of new Bee Network-standard walking, wheeling, and cycling routes delivered; over 1 million rides on Starling Bank Bikes cycle hire scheme.

More than 50,000 young people using Our Pass as of January 2025.

Created thousands of opportunities for our residents to upskill and enter the work force



375 T-level placements created and 14,000 young people attended 'Meet Your Future' career events; 125,000 used GMACS careers website; 150,000 had virtual work experience.

110,000 Greater Manchester residents supported to find employment since 2017, with more than 30,000 progressing into work through our Working Well programmes.



Connected people and places through digital technology

Ensured 92.4% of Greater Manchester is covered by gigabit broadband vs the national average of 84%.

Over 62,000 people have been helped to get online with free data SIMs since 2023, through more than 320 Greater Manchester Databanks.

2,700km of fibre connecting over 1,500 public sector sites, transforming connectivity speeds to schools, libraries and fire stations.



Helped people live better lives

Majority of residents are hopeful for the future and satisfied with their neighbourhood as a place to live.

44% reduction in rough sleeping since 2017.

UK's first World Health Organization age-friendly city region.

together
we are

**GREATER
MANCHESTER**

A photograph of three young people standing outdoors in an urban setting. On the left, a young man in a black puffer jacket and shorts leans against a red brick wall. In the center, a young woman with glasses and a denim jacket stands with her arms crossed. On the right, a young woman in a school uniform (blue blazer, white shirt, and dark skirt) stands with her hands in her pockets. They are all looking towards the right. The background features a white building with a perforated metal facade and a sign that says "Barnardo's". The ground is paved with red bricks, and long shadows are cast across it.

Together we are creating the
conditions for people to thrive.



From vision to delivery.

together
we are

**GREATER
MANCHESTER**



Our pledges to the people of Greater Manchester.

Our pledges

We will put equality goals at the heart of our plans, embedding inclusive practices across all public services.

Creating a healthy, safe, warm space for everyone to call home

By 2030 there will be at least 10,000 new, energy efficient homes for social rent across all 10 local authority areas.

By 2027 we will be building more social housing than we are losing through Right to Buy.

By 2030 everyone living in rented accommodation will have the right to request a property check under the Good Landlord Charter.

We will ensure that homelessness in Greater Manchester is prevented wherever possible and end the need for rough sleeping.

We will minimise the number of children in bed & breakfast accommodation beyond the statutory limit (6 weeks).

There will be a sustainable reduction in the number of families in unsuitable temporary accommodation in Greater Manchester overall.

We will continue A Bed Every Night scheme to ensure that rough sleeping is a rare, brief and non-recurring experience.

Building strong communities where people feel safe on their streets

By 2030, at least 95% of our residents will report feeling safe.

We will halve gender-based violence and knife crime.

We will make the Bee Network one of the safest transport systems in the world.



Developing the Bee Network as a transport system for a global city region

By 2030, 90% of people in Greater Manchester will be within a five-minute walk of a bus or tram that comes at least every 30 minutes.

We will keep the cost of travel on the Bee Network as low as possible, so everyone can afford to get where they need to go. We'll only charge what we need to run a safe and comfortable service and to reinvest in the Bee Network, so that it keeps improving.

By 2030, we will have the UK's first fully electric, integrated transport system across active travel, bus and tram services, supporting carbon neutrality by 2038.

By 2030, all local rail lines will be integrated with the Bee Network, with Greater Manchester communities the first outside London to be served by fully joined-up bike, bus, tram and train travel. We will drive major improvements to stations, including making more of them fully accessible and introducing capped, tap-on tap-off fares.

By 2040 we are aiming for no-one to be killed on our roads.

Creating a clear line of sight to high-quality jobs

All children and young people in Greater Manchester will thrive.

We will narrow the gap on school readiness compared with the England average.

We will increase school attendance for disadvantaged learners to at least 93%.

We will improve school achievement for disadvantaged young people.

We will increase the number of pupils reporting good or higher mental-wellbeing.



We will ensure that every young person has an opportunity to be in employment, education or training.

We will transform the technical education system in Greater Manchester through delivery of the Greater Manchester Baccalaureate and access to a guaranteed high-quality 45-day work placement for every young person who needs one.

Providing everyday support in every neighbourhood via Live Well centres and spaces

By 2030 everyone will get the support they need, in their neighbourhood, to live well.

Anyone will be able to access a bespoke Live Well appointment, via one-stop-shops providing practical help from debt to housing and more.

We will narrow the gap between the Greater Manchester employment rate and the national rate, with good sustainable jobs, that pay well and provide equal opportunities for all residents.

We will reduce the number of children living in poverty.

Greater Manchester residents will live a healthy life for longer (relative to England as a whole) and we will reduce the gap in healthy life years between the richest and poorest communities.

We will reduce smoking rates for adults: a rate of less than 5% by 2030 compared to the 2023 level of 12.5%.

We will help people to become more physically active, reducing the number of people classed as 'inactive' to less than 26.2% (pre-pandemic levels).

We will reduce the percentage of adults and children who are obese.

We will deliver year on year performance improvement in NHS services – including how long people wait in A&E, for a GP appointment, for mental health support and for an operation.

Each year we will increase the percentage of patients admitted, transferred, or discharged from A&E within 4 hours.

We will reduce the percentage of patients waiting longer than 18 weeks for elective treatment.

We will increase the number of residents who feel that it is easy to contact their GP practice.

We will increase access to mental health services for adults and young people.

Our voluntary, community, faith and social enterprise sector will be recognised for their foundational role in people's day to day lives, with funding of those social, civic, faith and community organisations as part of our collective commitment to enabling everyone to live well.

We will renew and expand our VCFSE Accord, fully implement the Fair Funding Protocol and increase the value of the services we collectively commission from the third sector.

Creating a greener future for everyone

We will maintain our commitment to reach carbon neutrality by 2038.

All residents will have access to advice and, where eligible, financial support to improve the energy efficiency of their home.

We will increase the amount of renewable energy and heat generated in Greater Manchester to increase energy security and reduce the cost of energy for all.

We will increase the quality and quantity of local community green space and expand the best spaces for nature to ensure people have access to a nature rich place near to where they live.

We will work with partners to deliver an Integrated Water Management Plan to manage our water resources, reducing the risk of flooding, increasing climate resilience and improving the quality of our lakes and rivers.



Making Greater Manchester a great place to do business

We will continue to create the conditions for people and businesses to succeed, unlocking a new form of economic growth.

We will ensure all residents and businesses have access to advice, support and space to start (including self-employment) and grow their businesses.

We will create 10,000 jobs and 2 million sqft per annum of employment floorspace by 2029 through our integrated investment pipeline.

We will continue to drive innovation and build on the success of our universities, increasing cross-sector investment in innovation so that by 2030 every £1 of extra public investment made in research and development in Greater Manchester will generate an additional £2.40 of investment by businesses in research and development.

We will maintain our position as the leading inward investment region (outside London) in the UK.

We will narrow the gap between the average household income in Greater Manchester and the average across the country.

We will support all employers in the city region to pay the Real Living Wage by 2030.

We will be at the forefront of new technologies from health and life sciences to AI – we will support an ethical and inclusive adoption to benefit residents, and become the fastest place to adopt innovations in the health service.

We will continue to grow our culture, leisure, sport and night time economy offers, providing opportunities for residents, visitors and businesses.



**We will fix the
foundations in life,
make us a greener
and more equal city
region, help grow
our economy and
make sure everyone
can live well.**



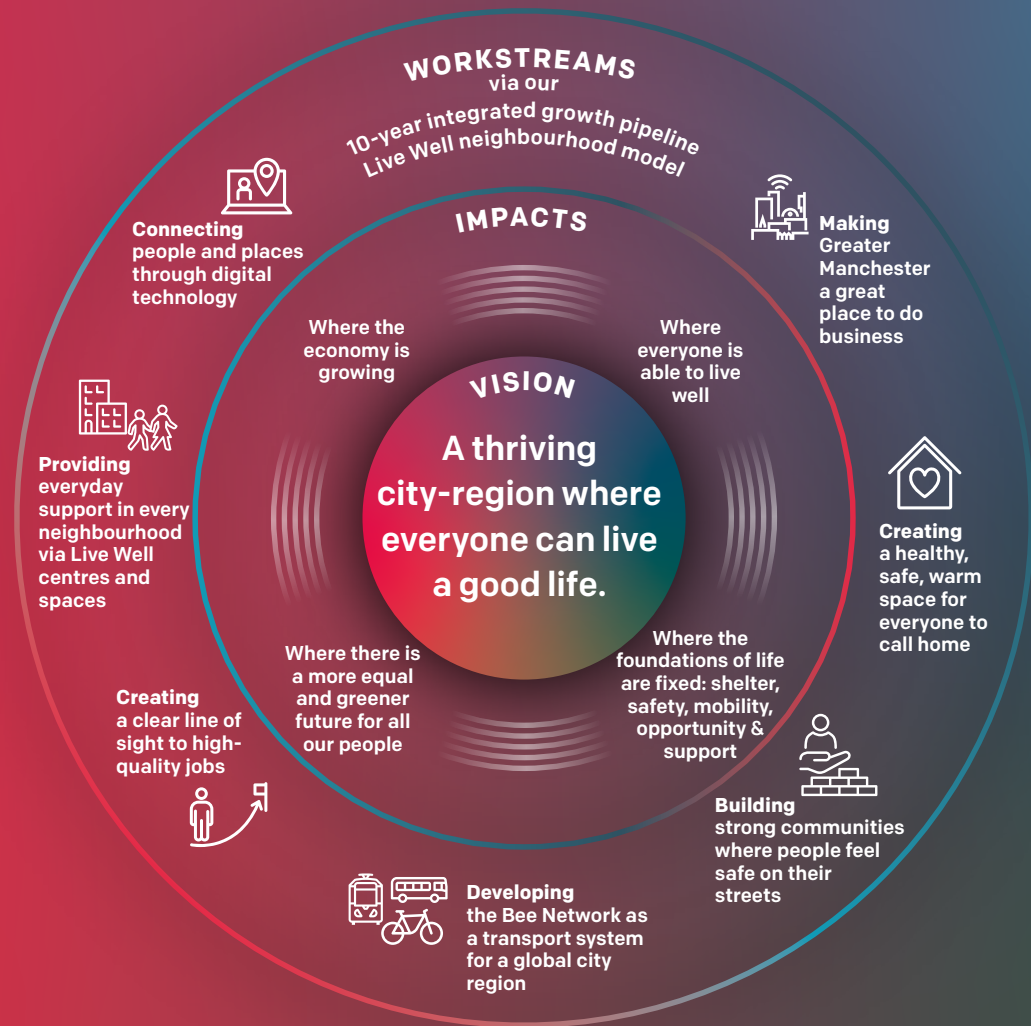
Our plans for growth and our people are underpinned by seven workstreams which are designed to fix the foundations of life: shelter, safety, mobility, opportunity and support. Each and every one will be delivered in a way that ensures a greener, more equal future for all.

That means people thriving in nature-rich environments resilient to climate change, with businesses making progress to Net Zero production. It means people feeling included, valued and with the power to participate in decisions about their community.

We will treat people as names not numbers, with effective public services taking a preventative approach.

To create a thriving city region where everyone can live a good life, we will focus on:

- Healthy homes for all
- Safe and strong communities
- A transport system for a global city region
- A clear line of sight to high-quality jobs
- Everyday support in every neighbourhood
- A great place to do business
- Digitally connected places and people



Healthy homes for all

A healthy, safe place
to call home is the
cornerstone of a
healthy, happy life.

1

Everyone will live in a good, warm, safe place they can call home. With support from the Government, our Housing First approach and unit will turn the tide on the housing crisis.

Over the coming decade, we will have built new homes and improved existing ones, driven up standards for renters, reduced the number of people living in temporary accommodation, and ensured residents have the support they need to access, improve and retain a decent, affordable home.

We'll do this by increasing the housing supply, aiming to build 75,000 new houses by 2030, including 10,000 energy efficient homes for social rent. Our Integrated Pipeline will deliver homes across

our boroughs, and our investment approach will unlock private sector investment.

Housing standards will be improved, with the Good Landlord Charter exposing poor landlords and supporting the many good ones. Meanwhile, we'll address the challenges people face in finding and keeping a home of their own, with wraparound support schemes and programmes for people at risk of homelessness.





Safe and strong communities

Safe streets and public transport in welcoming communities will allow us to feel confident going about our daily lives.

2.

Safe and strong communities

Our streets and public transport system will be safe and clean, in peaceful, integrated and welcoming communities.

We'll have consistently high performing police and fire services, with clear responses to 'real world' and online risks and opportunities as they emerge.

Together we'll create the conditions for everyone in Greater Manchester to feel secure and confident going about their daily lives.

We'll do this by continuing to increase trust and confidence in our police and fire services, building on their track record of improvement to continue to cut crime and antisocial behaviour, as well as protect our people and places.

Multi-agency work will progress at pace, including the Violence Reduction Unit tackling the underlying causes of violence by working with young people; and Vision Zero, the strategy to eliminate deaths and life-changing injuries on our roads by 2040.

From moor fires and flooding linked to climate change to cyber-attacks and threats to social cohesion, we will continue to build resilience in Greater Manchester. That will range from ensuring capability to provide rapid and robust responses to emergency incidents, to addressing climate challenges through our five-year environment plan and Local Nature Strategy.



A transport system for
a global city region

Our Bee Network
will make it even
easier to get around,
connecting every
community like
never before.

A transport system for a global city region

The Bee Network will connect people to jobs, education and leisure opportunities like never before.

With better, safer, easier and more affordable connections – all under one Bee Network brand – public transport and active travel will be the first choice for getting around our city region.

Whether walking, wheeling or cycling to catch the bus, tram or train, our world class public transport and active travel system will be fully integrated, providing seamless door-to-door journeys.

We'll do this by delivering the first fully integrated seamless transport system outside London. This will involve bringing eight commuter rail lines in to the Bee Network,

with new and upgraded rail stations, increased accessibility and fully joined-up with buses and trams.

Our clean, green, safe and affordable Bee Network will see Greater Manchester have a 100% zero emission bus fleet by 2030. We'll expand support to young people with free and discounted travel, and build on our collaboration with Greater Manchester Police to improve safety.

We'll also create new connections beyond our boundaries and, with Government support, develop a new railway linking Liverpool and Manchester, with the potential to create 40,000 jobs by 2050 and unlock 300,000 new homes over 20 years.

4

A clear line of sight to high-quality jobs

Removing barriers to good employment will help reduce poverty, improve health, and boost the economy by closing critical skills gaps.

A clear line of sight to high-quality jobs

Greater Manchester will be the UK's leading engine of social mobility, with all young people having a clear path towards a good job in our growing economy.

A transformed technical education system via the Greater Manchester Baccalaureate (MBacc) will give young people a clear line of sight to high-quality jobs in sectors that are growing in our city-region, as well as increased access to essential life and work skills, growing their sense of hope and optimism for the future.

Co-designed with young people, education and business leaders, the MBacc draws on local labour market data to guide young people to our growth sectors, from digital and technology, to engineering and manufacturing, as well as local

government, emergency services and transport jobs.

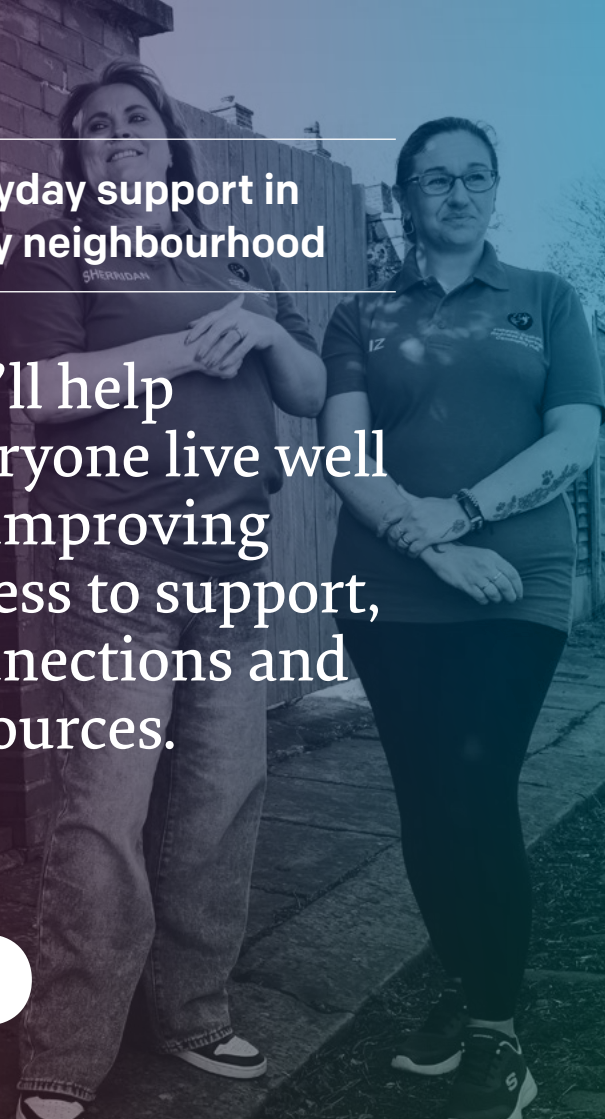
We'll also create better access to good jobs, with support to upskill and reskill, with a commitment to raise our employment rate. We'll do this by building people's confidence and basic skills to enable more people to consider moving into work, and helping 50,000 more residents to enter, sustain and progress in work.



5.

Everyday support in
every neighbourhood

We'll help
everyone live well
by improving
access to support,
connections and
resources.



Everyday support in every neighbourhood

A network of welcoming and empowering Live Well centres, community spaces and support offers will provide everyday support in every neighbourhood around jobs, health, housing, debt, food, family and social support and connection.

Spaces will be developed for communities of identity and experience too, for example providing young people with a safe space in their community and a trusted adult to talk to.

This will bring together the best of our public services and voluntary, community, faith and social enterprise groups, with dedicated funding and an investment strategy that recognises the foundational benefits of those social, civic and community organisations that foster

hope, connection and resilience.

We will create the conditions for people to thrive – tackling health, social and economic inequalities, shifting from reactive to preventative public services by addressing root causes and growing social infrastructure and community resilience.

From making sure every child gets the best start in life with practical support for families, to supporting our rapidly growing older population, the Live Well approach will support residents throughout every stage of their lives.





A great place
to do business

We'll kickstart
another decade
of growth by
delivering homes,
jobs and innovation,
supporting existing
and attracting new
industries.

A great place to do business

**Greater Manchester will see
another decade of sustainable and
inclusive growth.**

Our ten-year integrated pipeline will increase our economic output and spread the benefits of growth across the city region, helping to rebalance our economy.

With the right Government support, we'll do this by delivering new homes and employment sites, built at a scale and pace not seen this century. Our integrated pipeline will target investment at six growth locations – nationally significant sites with land earmarked and shovel-ready.

In the next decade, our internationally renowned universities, businesses and the public sector will work together to create more connected clusters

of innovation, build on the sectors where we are already world leaders, and establish Greater Manchester as a global centre for cyber security and artificial intelligence (AI). We'll also nurture our cultural, visitor and night-time economies, supporting, promoting and increasing access to our rich cultural sector, continuing to attract audiences from around the world.

This will all be underpinned by an expanded and upskilled workforce. Employers will be able to find skilled workers locally and attract and develop the talent they need. Our diverse workforce will be able to access high-quality jobs with pay and working conditions that support wellbeing and drive further productivity.

7

Digitally connected places and people

It's essential that everyone in our city region can thrive in the digital age – a new industrial revolution powered by artificial intelligence.

Digitally connected places and people

As we enter a new industrial revolution, shaped by advances in artificial intelligence (AI), it's essential that everyone in our city region can thrive in the digital age.

Greater Manchester will be a fully digitally enabled region, which means using digital technology in ways that make things quicker and easier to achieve our ambitions. We are committed to using technology and data proactively and responsibly, giving people the connectivity, tools and know-how to work and live smarter.

We'll do this by ending the digital divide, helping more people to get online and working to remove barriers like connectivity, confidence, skills, affordability and accessibility.

By 2030 all areas of Greater Manchester will benefit from next generation gigabit-capable broadband and 5G coverage, with support to get online available in every neighbourhood. We'll also grow community Wifi support and keep working to remove cost and connectivity barriers for low-income households.

Growing our digitally enabled public services will also continue at pace. We'll ramp up responsible AI adoption, working with Government, industry and academia to be the place to come to test and grow AI businesses.



“This is a
place full of
opportunities
to grow
and build a
community
together.”

together
we are

**GREATER
MANCHESTER**



Read the full strategy and find out more at
TogetherWeAreGM.co.uk

together
we are

**GREATER
MANCHESTER**

Bolton
Bury
Manchester
Oldham
Rochdale

Salford
Stockport
Tameside
Trafford
Wigan